



Boise Cascade®
MILLWORK

SALT LAKE CITY MILLWORK





Boise Cascade[®]
MILLWORK

SALT LAKE CITY MILLWORK MOULDINGS



Boise Cascade[®]
MILLWORK

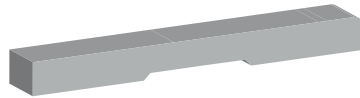
SALT LAKE CITY MILLWORK EXTERIOR FRAMES & BRICKMOLD

MDF CASING PRIMED



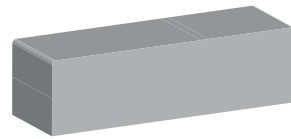
303 3/4"x3-1/2"x17'
303 3/4"x3-1/2"x86"
313 11/16"x3-1/4"x17'
313 11/16"x3-1/4"x85"
313S 5/8"x3-1/4"x17'
313S 5/8"x3-1/4"x85"
473 9/16"x2-1/4"x17'
473 9/16"x2-1/4"x85"

MDF BASE PRIMED



403 1/2"x4"x16'
603 1/2"x5"x16'
803 1/2"x7-1/4"x16'
603M 5/8"x5-1/2"x16'

MDF HEADER PRIMED 5/4



5514 1"x5-1/4"x16'
546 1"x5-1/2"x16'
544 1"x3-1/2"x16'
548 1" x 7-1/4"x16'

MDF 1X BOARDS



HOOK STRIP
246 HOOKSTRIP PRIMED 12MMX3"x16'
480 HOOKSTRIP RAW 14MMX3-1/4"x16'

RAW BOARDS SQ EDGE
3/4"x3-1/2"x16
3/4"x5-1/2"x16
3/4"x7-1/4"x16
3/4"x11-1/4"x16
3/4"x15-1/4"x16'

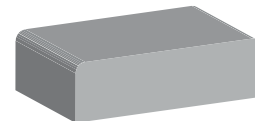
PRIMED BOARDS E2E
11/16"x3-1/2"x17'
11/16"x5-1/2"x17'
11/16"x7-1/4"x17'
11/16"x11-1/4"x17'

MDF SHIPLAP PRIMED



106 1/2"x5-1/2"x16'
108 1/2"x7-1/4"x16'

FJ PINE DOOR STOP



6/8 BULLNOSE STOP FJ PINE DBL MTRD
887 3/8"x1-1/4"x80-9/16"
877 7/16"x1-1/4"x80-9/16"
8/0 BULLNOSE STOP FJ PINE DBL MTRD
877 7/16"x1-1/4"x96-9/16"

FJ PINE JAMB



FJ PINE FLAT JAMB 6/8
11/16"x4-5/8"x81-9/16" 4-5/8 6/8
11/16x4-7/8x81-9/16" 4-7/8 6/8
11/16"x5-1/4"x81-9/16" 5-1/4 6/8
11/16"x6-5/8"x81-9/16" 6-5/8 6/8
11/16"x6-7/8"x81-9/16" 6-7/8 6/8
11/16"x7-1/4"x81-9/16" 7-1/4 6/8

FJ PINE FLAT JAMB 7/0
11/16"x4-7/8"x85-9/16" 4-7/8 7/0
11/16"x6-7/8"x85-9/16" 6-7/8 7/0

FJ PINE FLAT JAMB 8/0
11/16x4-5/8x97-9/16" 4-5/8 8/0
11/16"x4-7/8"x97-9/16" 4-7/8 8/0
11/16"x6-5/8"x97-9/16" 6-5/8 8/0
11/16"x6-7/8"x97-9/16" 6-7/8 8/0
11/16"x7-1/4"x97-9/16" 7-1/4 8/0

KERF FJ PINE FLAT JAMBS
11/16"x3-1/2"x97-9/16" 3-1/2 8/0

JAMB FJ PRIMED BLANKS FOR 1-3/8 DOOR
6/8 4-9/16 82-3/4

6/8 4-9/16 81-5/8 JAMB COMPOSITE SMOOTH
6/8 6-9/16 81-5/8 JAMB COMPOSITE SMOOTH
6/8 4-9/16 81-5/8 JAMB COMPOSITE GRAINED
6/8 6-9/16 81-5/8 JAMB COMPOSITE GRAINED

8/0 4-9/16 97-5/8 JAMB COMPOSITE SMOOTH
8/0 5-1/4 97-5/8 JAMB COMPOSITE SMOOTH
8/0 6-9/16 97-5/8 JAMB COMPOSITE SMOOTH
8/0 7-1/4 97-5/8 JAMB COMPOSITE SMOOTH
8/0 4-9/16 97-5/8 JAMB COMPOSITE GRAINED
8/0 5-1/4 97-5/8 JAMB COMPOSITE GRAINED
8/0 6-9/16 97-5/8 JAMB COMPOSITE GRAINED

6/8 4-9/16 82-3/4 JAMB PRIMED FJ BLANK KERFED FOR 1-3/8 DOOR 1-13/16" RABBET

6/8 4-9/16 82" JAMB PRIMED FJ BLANK KERFED
8/0 4-9/16 98" JAMB PRIMED FJ BLANK KERFED
8/0 6-9/16 98" JAMB PRIMED FJ BLANK KERFED
8/0 7-1/4 98" JAMB PRIMED FJ BLANK KERFED

6/8 4-9/16 81-3/4 JAMB PRIMED FJ BLANK KERFED
6/8 6-9/16 81-3/4 JAMB PRIMED FJ BLANK KERFED
6/8 7-1/4 81-3/4 JAMB PRIMED FJ BLANK KERFED
6/8 9-1/2 81-3/4 JAMB PRIMED FJ BLANK KERFED
8/0 4-9/16 97-3/4 JAMB PRIMED FJ BLANK KERFED
8/0 6-9/16 97-3/4 JAMB PRIMED FJ BLANK KERFED
8/0 7-1/4 97-3/4 JAMB PRIMED FJ BLANK KERFED
8/0 9-1/2 97-3/4 JAMB PRIMED FJ BLANK KERFED

6/8 4-1/8 81-5/8 JAMB PRIMED FJ BLANK KERFED
6/8 4-9/16 81-5/8 JAMB PRIMED FJ BLANK KERFED
6/8 5-1/4 81-5/8 JAMB PRIMED FJ BLANK KERFED
6/8 6-9/16 81-5/8 JAMB PRIMED FJ BLANK KERFED
6/8 7-1/4 81-5/8 JAMB PRIMED FJ BLANK KERFED
6/8 9-1/2 81-5/8 JAMB PRIMED FJ BLANK KERFED

8/0 4-9/16 97-5/8 JAMB PRIMED FJ BLANK KERFED
8/0 6-9/16 97-5/8 JAMB PRIMED FJ BLANK KERFED
8/0 7-1/4 97-5/8 JAMB PRIMED FJ BLANK KERFED

10/0 7-1/4 JAMB PRIMED FJ BLANK KERFED

6/8 4-1/8 81-5/8 JAMB PRIMED FJ MACHINED W/S
6/8 4-9/16 81-5/8 JAMB PRIMED FJ MACHINED W/S
6/8 6-9/16 81-5/8 JAMB PRIMED FJ MACHINED W/S
8/0 6-9/16 81-5/8 JAMB PRIMED FJ MACHINED W/S



EXTERIOR FRAME WITH A SAW KERF.



WM180

81-5/8 BRICKMOULD COMPOSITE GRAINED MITRED WM180
97-5/8 BRICKMOULD COMPOSITE GRAINED MITRED WM180
81-5/8 BRICKMOULD COMPOSITE SMOOTH MITRED WM180
97-5/8 BRICKMOULD COMPOSITE SMOOTH MITRED WM180

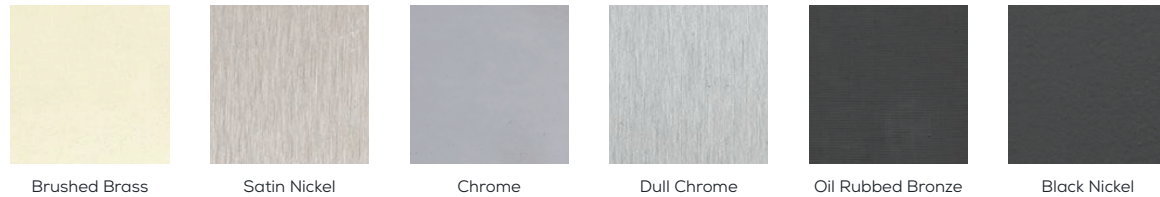
81-5/8 BRICKMOULD PRIMED FJ MITRED WM180
97-5/8 BRICKMOULD PRIMED FJ MITRED WM180
3/0 BRICKMOULD HEADER PRIMED FJ MITRED WM180
2/8 BRICKMOULD HEADER PRIMED FJ MITRED WM 180

81-3/4 BRICKMOULD PRIMED FJ MITRED WM180
97-3/4 BRICKMOULD PRIMED FJ MITRED WM180

17' BRICKMOULD PRIMED FJ

SALT LAKE CITY MILLWORK

HINGES AND HARDWARE



Description	US4	US15	US26	US26D	US10B-P	US1D	Extended Description
3.5x3.5 5/8 HINGE SI RAD RES	•	•	•	•	•	•	100/CTN
4x4 5/8 HINGE SI RAD RES	•	•	•	•	•	•	100/CTN
4x4 5/8 HINGE SO RAD NRP RES	•	•	•	•	•	•	100/CTN
3.5x3.5 5/8 HINGE BALL BEARING SI RAD RES	•	•	•	•	•	•	100/CTN
4x4 5/8 HINGE BALL BEARING SI RAD RES	•	•	•	•	•	•	100/CTN
4x4 5/8 HINGE SELF CLOSING SI RAD	•	•	•	•	•	•	50/CTN
6" FLUSH BOLT		•			•	•	100/CTN
BALL CATCH		•			•	•	100/CTN
86-1/2" STEEL BARN TRACK HDWR KIT		•			•		
98-1/2" STEEL BARN TRACK HDWR KIT		•			•		



Color Code
 US4 - Brushed Brass
 US15 - Satin Nickel
 US26 - Chrome
 US26D - Dull Chrome
 US10B-P - ORB
 US1D - Black Nickel

Boise Cascade Millwork in Salt Lake City

Customize projects with choices in decorative glass, PrismaGuard finishes, handing, hinge locations and mull options.

See what sets Boise Cascade Millwork apart from other millwork options, including our Salt Lake City area trucks, curtain trucks and SDLs.

Transcend the Threshold of Quality

Transcend your expectations of quality with the best in millwork at the Salt Lake City area's finest door shop, offering the full line of Therma-Tru doors, Steves Doors and the Simpson Door Company.



Scan to
Learn More

Therma-Tru® Exterior Doors

Classic Craft
 Fir Grain
 Walnut Grain
 Mahogany Grain
 Canvas
Fiber-Classic
 Fiber Classic Oak
 Fiber Classic Mahogany

Smooth-Star
Custom Features
 Single Door Units
 Double Door Units
 Triple Door Units
 Transoms
 Sidelites
 Patio Door Units
 Pulse Doors Modern Designs
 Sliding Screens
 Retractable Screens
 Clear Glass
 Decorative Glass
 Privacy Glass
 SDL Glass Options
 Internal Blinds
 Grill Between Glass
 Composite Frames & Trim
 PrismaGuard Prefinished
 Multi-Point Locks
 Available in 6-8 & 8-0 Heights

Profiles & Traditions Steel Stile & Rail Interior/ Exterior Slabs

Simpson Door Company,
Rogue Valley, Woodgrain

Interior Molded/Flush Slabs

Steves & Sons Door Co.
Haley Bros

Hollow Core & Solid Core
 Bi-Folds
 20- Minute Fire Doors
 Colonist - 6 panel Textured
 Carrara - 2 Panel Square Top
 Caiman - 2 Panel Arch Top
 Rockport - 5 Panel
 Santa Fe - 2 Panel Grooved
 Madison - 1 Panel Shaker
 Monroe - 2 Panel Shaker
 Birkdale - 3 Panel Equal Shaker
 Craftsman - 3 Panel
 Conmore - 5 Panel Shaker

Flush

Birch & Lauan
 PCHB

Locks

Kwikset, Safe Lock

Johnson Pocket Door

2x4 & 2x6 6/8,8/0 Height, Soft
 Close Hardware

Millwork

Interior Jambs
 Exterior Jambs
 Door Stop

MDF Moulding

Base, Case, Boards, Shiplap,
 Crown
 Particle Board Shelving/
 Stepping
 MDF Sheets

Hardware

Barn Door Tracks
 Bifold Track
 Bifold
 Hardware
 Hinges

Fypon

